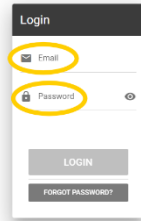


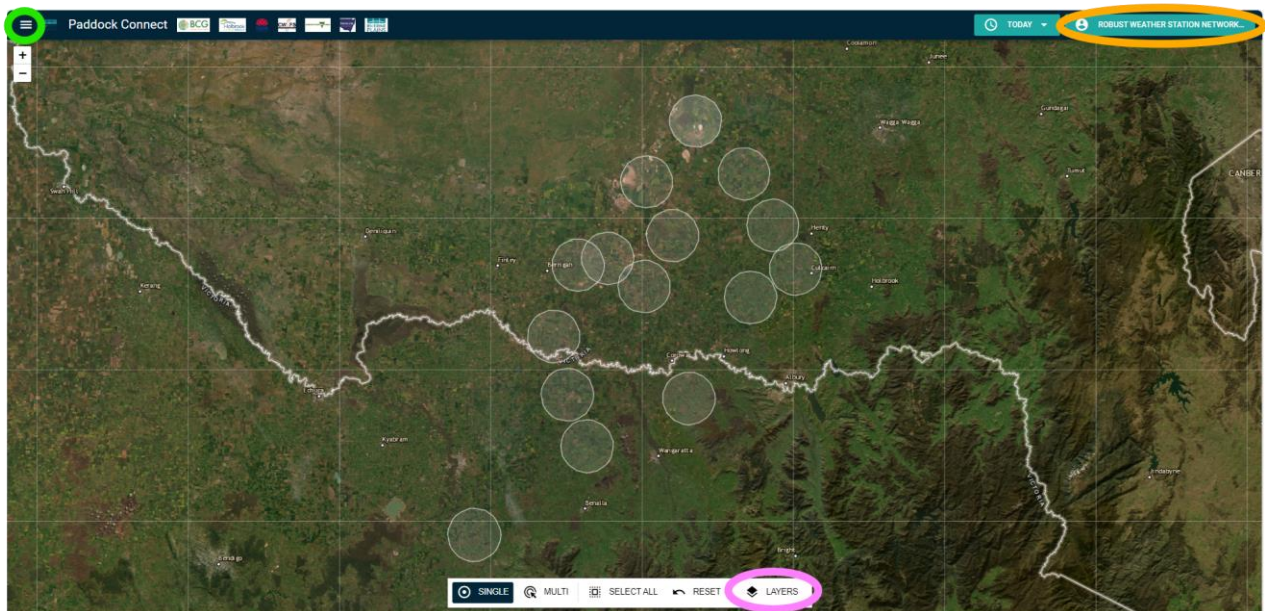
# Riverine Plains Weather

## 1. Login



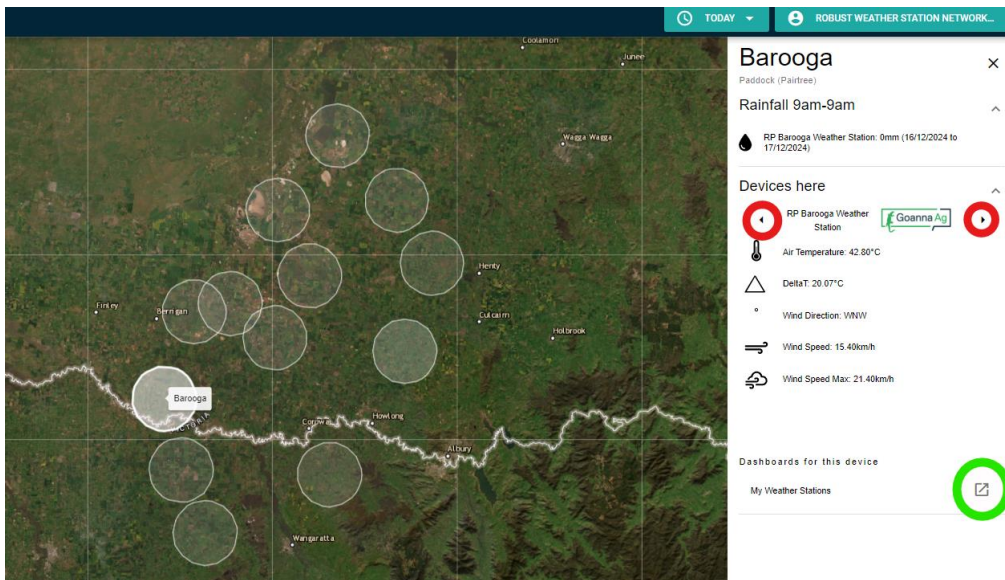
- Go to login page: <https://rivplainsweather.pairtree.co>
- Enter email: ***rivplains@pairtree.co***  
password: ***RivPlains!RWSN2024*** and click 'LOGIN'

## 2. Navigation



There are 4 primary functions on the home page:

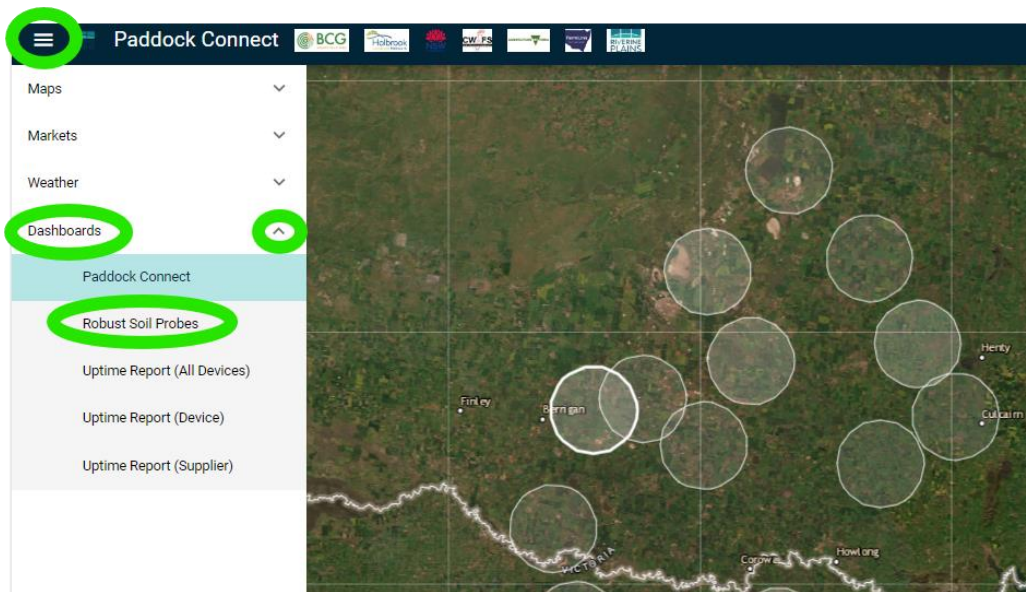
1. Click on a Location (**white circle**)
2. Click on the Hamburger Menu (**green circle**)
3. Click on the Layers (**pink circle**)
4. Click on the Location List (**yellow circle**)



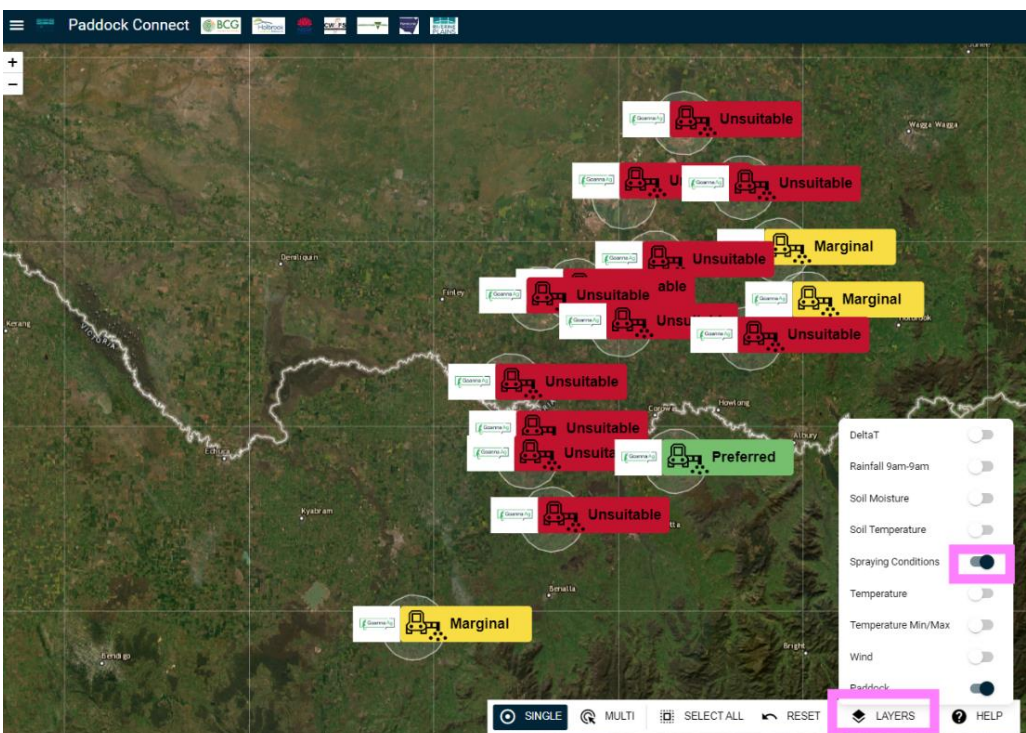
Click the white circle location to open slide out panel on right of screen

In the panel use the arrows to see devices at this location

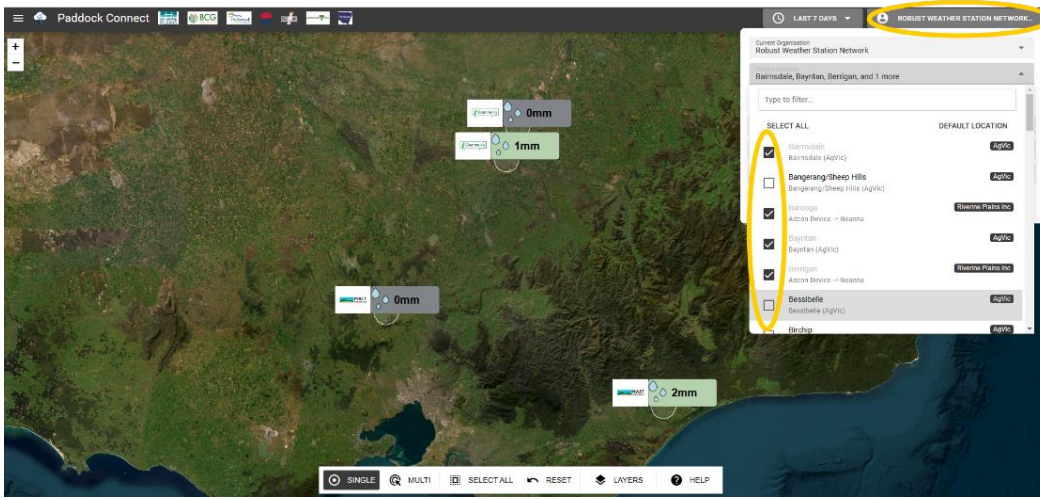
Click the shortcut button to access the dashboards



Click the Hamburger menu to access the dashboards

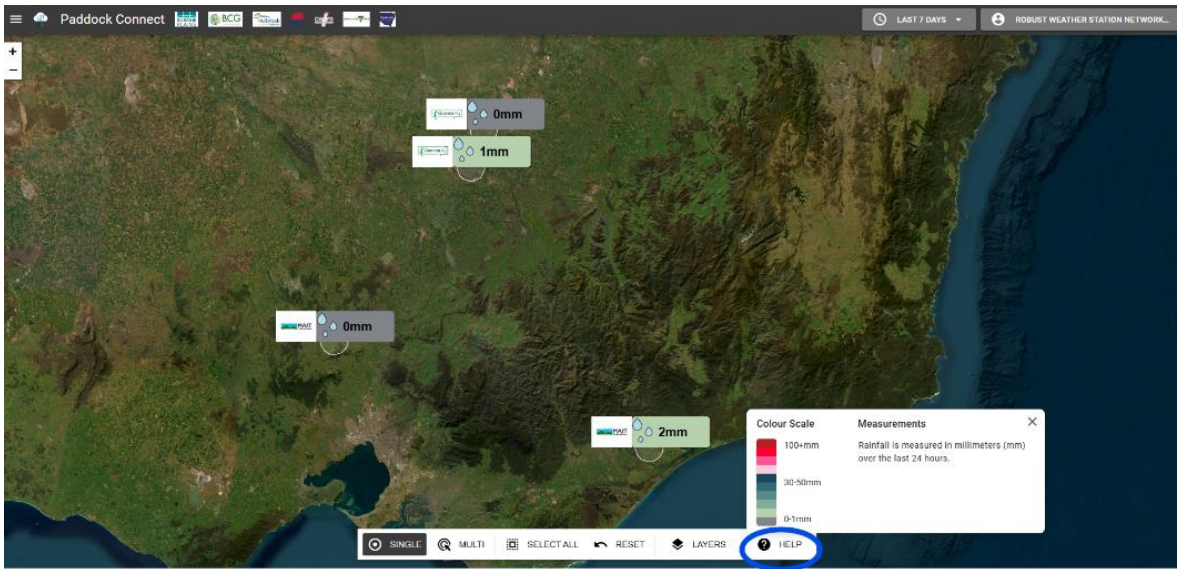


Layers can be toggled on and off



Select one or more locations to display

### 3. Help



Click 'HELP' (blue circle) to get more information on the layer that is displayed.

Supplier: GoannaAg | Current Device: RP Barrooga Weather Station

**Current Weather**

- Air Temperature: 41.80°C
- Barometric Pressure: 989.00hPa
- Battery Voltage: 13.40V
- DeltaT: 19.40°C
- Dew Point: 12.93°C
- ETc: 13.50mm
- Fire Danger Index: 18.00rating
- Relative Humidity: 18.00%

**Observed Rainfall**

Period	Rainfall (mm)
Year to Date	430.5
Month to Date	21.60
30 Days	110.80
7 Days	0.00
24 Hours	0.00

**Wind (Last 4 hours)**: RP Barrooga Weather Station


**Wind (Last 6 days)**: RP Barrooga Weather Station

rainfall grouping is recorded from the current time to the previous time.

**For example:**  
The 24 hour bar represents all rainfall from the current time to 24 hours ago.

- The chart will populate with as much recent data as possible recorded from a physical device. If it cannot populate a full 365 days, it will supplement the remainder with [data from SILO](#).

**For example:**  
If a device has only been recording the last 150 days, this will be displayed for the most recent 5 months, the remaining 215 days are made up of SILO data.

Click the  (orange circle) on any widget to get more information.